

# Preparation of Papers for Proceedings of ISBET 2009

First Author A<sup>1</sup>, Hideki Yukawa<sup>2</sup>, and Korbinian Brodmann<sup>2</sup>

<sup>1</sup> Kyoto University, Kyoto, 615-8510 Japan

<sup>2</sup> Affiliation, City, zip code Country

*E-mail address @ of corresponding author*

## ABSTRACT

These instructions give you guidelines for preparing papers for Proceedings of ISBET 2009. Please use this document as a template to prepare your manuscript in a WORD format. Contributions should be written in English in a length of 2, 3, or 4 pages including references, figures and tables. Do not change line spacing to squeeze more text into a limited number of pages. Should follow the layout as defined below. **ABSTRACT** should be written in this space using 9 points bold letters. The length of the abstract may be 100-200 words, though not strict. This example is about 100 words.

**KEYWORDS:** MEG, MCG, inverse solution, about 5 words in bold letters

## INTRODUCTION

Page layout: Text should be written in A4 (21 x 29.6) size with 3.0 cm margins in the top and bottom, 2.0 cm margins in the left and right and double columns 8 mm apart. The font size of title, authors and affiliations designated in the example shown at the top are suggestions. You may reduce/adjust the font size to fit your title into the spaces appropriately.

Main text: Write the main text using 10 point font of Times New Roman (or Times) in single line spacing. Everything on the page must fit within the text area, including tables, figures, and captions. Use this template to write your paper according to the above-described format.

## METHODS

Headings: Type main headings for each section such as INTRODUCTION, METHODS, RESULTS and DISCUSSION in bold capital letters.

Place the table caption over the table. Use Roman numerals (Table I, Table II, etc) for the table number. All figures (line drawings and photographs) must be in the appropriate size and positioned in place. Center the figures above the caption and number all figures with

Arabic numbers (Fig. 1, Fig. 2, etc). Example for figure and figure caption are shown on the bottom of this page.

Keep one-and-half line space between the end of the paragraph and the top (i.e., heading) of the next session.

## RESULTS

### Subheading

Subheadings may be used in the main sessions. Use bold letters to give the subheading. Put no extra space between the subheading and the subsequent text.

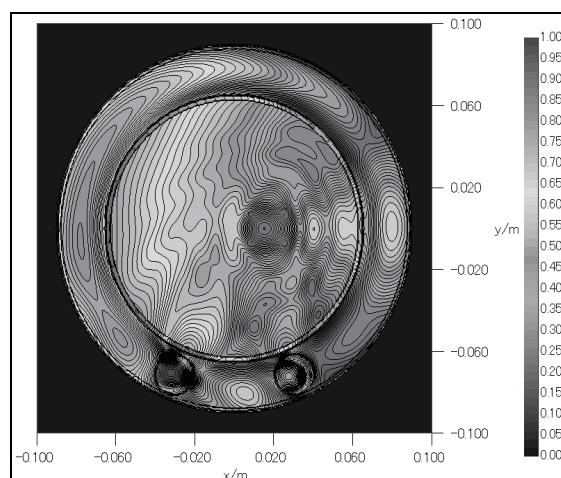


Fig. 1. This is an example of figure. Please use “Fig. 1, Fig. 2, etc” to indicate line drawings and photographs. You may use color pictures and photographs in your pdf manuscript. However, they are reproduced black and white in the Proceedings by default. Color printing is also available when you submit ‘color printing application form’ and prepay extra charge. Figure captions should be written in 9 point letters. Note that the frame of this example is optional.

### Mathematics

Equations: Use the equation editor to create equations. To make your equations more compact, you may use the

solidus (/). (See the example equation below). Equations should be written within a column, separated with appropriate spacing from the text above and below. Punctuate equations when they are part of a sentence as:

$$f_i(\text{equation}) = \sum_k G_k / (2\pi r^2) \cdot \int P(x) \exp[-\lambda(z_{i+1} - z_i)^2] J_1(\lambda r_2) J_0(\lambda r_i) d\lambda \quad (1)$$

Number equations consecutively in parentheses at the right-hand margin.

## DISCUSSION

### Editorial Policy

Authors of accepted abstract, who have made registration for the participation in ISBET 2009, can submit a single Proceedings-paper per person. Invited speakers and students can also submit a paper. It is required to finish the registration by the submission deadline.

### Review and publication

The editors of the Proceedings of ISBET 2009 will review the style and format of the paper. Only papers that are received before the deadline will be published. The editors may ask authors for revision(s) about technical deficiencies. Remember to check spelling and sentence grammar. If your native language is not English, please ask a native English-speaking colleague to proofread your paper. Accepted papers will be published in a book titled "Brain Topography and Multimodal Imaging".

Table I. Specification of Proceedings of ISBET 2009. Table captions should be written in 9 point letters.

Book title	Brain Topography and Multimodal Imaging
Publisher	Kyoto University Press (appointed)
Editorial policy	Paper submission is not compulsory.
Language	English
Paper length	Minimum 2 pages, maximum 4 pages
Paper file	pdf format (pdf/X-1a)
Color printing	Available by prepaying extra 38,000 yen charge per paper regardless of paper length
Reprint	Available by prepaying extra charge Application procedure is going to be posted on the isbet2009 website
Deadline	31 July, 2009

## CONCLUSION

A conclusion section is not required. You may write the conclusion to elaborate on the importance of your work or suggest extensions.

## ACKNOWLEDGEMENT

Acknowledgment may be given in the final part of the text. Use singular heading even if you have many Acknowledgments.

## REFERENCES

Number references consecutively in the text with superscript numbers in bracket, i.e., <sup>[1-2]</sup>, and list the references at the end of the paper in the order in which they are cited in the text. Capitalize only the first word in a paper title, except for proper nouns and element symbols. Give all authors' names; do not use "et al." unless there are six authors or more. Use 9 point font in single line space, as shown in the following examples.

- [1] Y. Okada, J. Jung, and T. Kobayashi, "An automatic identification and removal method for eyeblink artifacts in event-related magnetoencephalographic measurements," *Physiological Measurements*, vol. 28, pp. 1523-1532, 2007.
- [2] T. Kobayashi and K. Kato, "Reactivity of human cortical oscillations reflecting conscious perception in binocular rivalry," in *No Matter, Never Mind: Toward a science of consciousness - Fundamental approaches*, K. Yasue et al., Ed. The Netherlands: John Benjamins Publishing CO, 2002, pp. 261 -271.

## SUBMITTING YOUR MANUSCRIPT

The original manuscript should be prepared in PDF file and submitted by 31 July, 2009, via following URL; <https://hawk2.kyoto-bauc.or.jp/conference/ISBET2009/proceedings.php>